



## CEO Message

*Pictured: SGCH customer Damian at his new home in Miller*

Just as the COVID-19 pandemic has reshaped the way we all live and what we imagine our future looks like; it has also impacted how SGCH operates, and the planned delivery of initiatives and projects. With staying home becoming the first defence against the spread of the virus, the pandemic has brought challenges in our housing system into sharper focus, and shown what is possible with programs like Together Home.

While there is much to be done as Australia responds to the pandemic and builds towards a new normal, SGCH is proud to be providing stability for the people and communities we serve during these uncertain times.

With the ongoing support of Government and other partners, our business has proven flexible and resilient, allowing us to provide essential services for our customers. We are also growing our impact by delivering more homes and during financial year 2019/2020 we delivered 194 new homes.

We have four active construction sites across Sydney on track to deliver over 300 homes in 2021. Our active construction projects are supporting 1548 jobs and \$498.8 million of broader economic activity, and on completion will provide long term social and affordable housing.

We are deeply appreciative for the ongoing support of our stakeholders and commitment of our team during this extraordinary year.



In NSW, government programs such as the Social and Affordable Housing Fund (SAHF), and innovative models forming part of the Communities Plus program have formed a policy leadership position in reform of the social and affordable housing system. This week, in a NSW State budget working hard on all fronts, there was an \$812 million commitment for social and affordable housing which is another step in the right direction. It is incumbent on partners such as SGCH to work with government to make best use of this investment in anticipation that further commitments will build on this foundation to ensure NSW really is a great place for everyone.

As we head towards our AGM, I am proud to present our **Annual Report 2020**. This document is an overview of how we are performing against our **Strategic Plan 2019-2024**, our current operations and future outlook along with the highlights of the 2019/2020 Financial Year.

We'd love to know what you thought of the report, please provide your feedback in this **short survey**.

We remain committed to working with you to help create better places, stronger communities and a healthy economy as we head into 2021.



## SGCH Group Board of Directors

At the November Annual General Meeting we will farewell two long serving Directors; Graham Millett and also our immediate past Chair, David Thrift. Graham and David have each served for over 10 years, bringing a wealth of experience and expertise to the SGCH Group. We thank them for their service and wish them both well in their future endeavours.

We also welcome Karen Ovad who has recently filled a casual vacancy and will be nominated at the AGM for election to a three-year term.

Karen brings over 25 years' experience working with some of the world's most recognised brands in governance, risk, internal audit, board advisory and strategic human resources. [Read More](#)



Karen Ovad

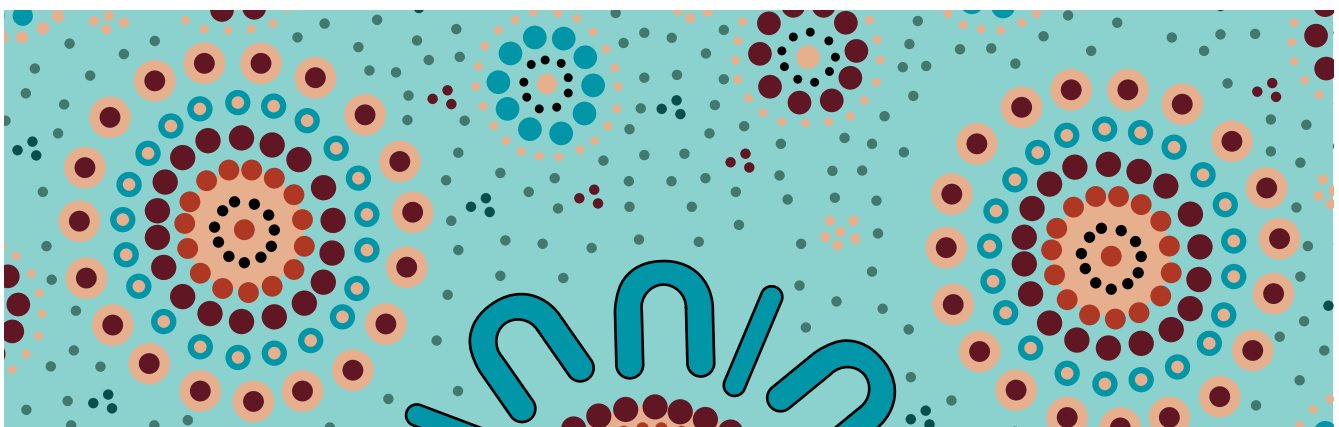
## Aboriginal Affordable Housing Engagement Coordinator, Tabatha Dantoine



AAHEC, Tabatha Dantoine with colleagues from Bridge and City West Housing

SGCH has recently employed an Aboriginal Affordable Housing Engagement Coordinator (AAHEC), Tabatha Dantoine. The position is based with SGCH and the resource is shared with Bridge and City West Housing. Funded by the City of Sydney, the AAHEC role is about promoting affordable housing to Aboriginal customers in the inner city and building cultural awareness in our organisations.

We welcome Tabatha to the SGCH team and look forward to working with our partners to deliver a great service to our Aboriginal applicants and customers.



Byala ( Caitlin Trindall, 2019)



## Our inner-city developments: City Road, Chippendale and Gibbons Street, Redfern

Work continues to progress on our new developments in inner-Sydney where we are on track to deliver 235 new homes by mid-2021.

At Foyer Central in City Road, Chippendale, progress continues on our five-story building with residents to move in early 2021. This development will boast 73 studio apartments and ground floor retail. Fifty-three of the apartments will be a Youth Foyer model, aimed at tackling youth homelessness. Our partners in the project are City of Sydney, NSW Department Communities and Justice, NSW Office of Social Impact, Uniting and Social Ventures Australia.

Gibbons Street, Redfern, is SGCH's largest project to date and is due for completion next June. The project is an 18-storey, 160 apartment development. Sharing our vision to provide social and affordable housing with proximity to education and employment hubs, the City of Sydney sold the former Council depot site at a discount to market rate. With Lendlease appointed as the builder, this development will deliver a mix of one, two and three-bedroom apartments, ground floor commercial space, a community hub and local management office.



## Shortlisted developments

In the 2019/2020 Financial Year we delivered 194 homes in high demand areas in Sydney's south west. Known as the Brickmakers Creek Precinct, these social and affordable homes are built to a minimum 7-star NatHERS standard and include Silver livable features creating secure and sustainable housing that meets our customers' needs now and the future.

We're delighted to have been shortlisted for two development awards this year.

We are a finalist in the Urban Taskforce Development Excellence Award for the Brickmakers Creek Precinct, and one of the developments in Brickmakers, at Willan Drive, Cabramatta, has also been shortlisted in the Urban Development Institute of Australia awards.



## Jason Clare Visit

In August, we welcomed Federal Shadow Minister for Housing and Homelessness Jason Clare, MP to our project in Ironbark Avenue, Casula to showcase our development pipeline of social and affordable housing stock. Ironbark Avenue is a 7.5 star NatHERS rated development with a project cost of \$32 million. In the early new year, 63 families and individuals will move into their new homes.

As the first project of density in the neighbourhood, the seamless delivery of Ironbark Avenue relied on SGCH's inhouse expertise in planning, design and community engagement to create a building that fits readily into the existing streetscape and provides a high level of privacy and amenity for our customers.



left to right: Jason Clare MP, Michael from PBS and Scott Langford at the Ironbark Avenue site.

SGCH recently featured in a short video to demonstrate the impact of low cost finance as we deliver more homes for those in need. Featuring Group CEO Scott Langford and customer Cheryle, view the short clip [here](#).



255 Hoxton Park Road, Cartwright





## Employer of Choice

### SGCH an Employer of Choice - Australian Business Awards

We are very proud to announce that SGCH was selected as an Employer of Choice in the 2020 Australian Business Awards. This prestigious award recognises businesses that have developed leading workplaces to maximise the full potential of their workforce through practices that demonstrate effective employee recruitment, engagement and retention.

As an entrant, we were required to demonstrate our achievements across the key areas of Organisational Culture; Leadership and Strategy; Employee Education, Training and Development; Employee Health, Safety and Satisfaction; Performance Management; Recognition and Remuneration.

The award is testament to our commitment to putting people first, and living our values of innovation, support, accountability, respect and integrity.

“We were honoured to be recognised as an Employer of Choice this year.

SGCH possesses the characteristics of a well-managed, high performing, industry leading organisation that provides a stimulating and supportive workplace. This is an absolute testament of our high performing culture.”

*Suellen McCaffrey, General Manager, People and Group Services*



*Team members at our Bonnyrigg Office*



*Team members at our St Leonards Office*